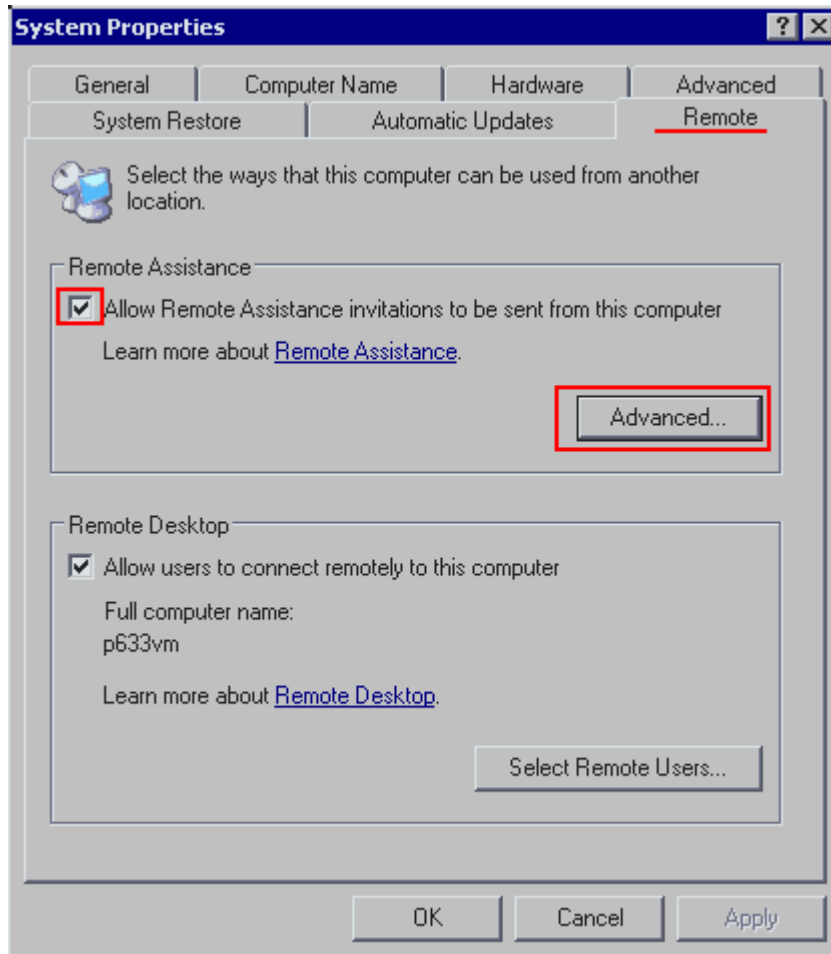
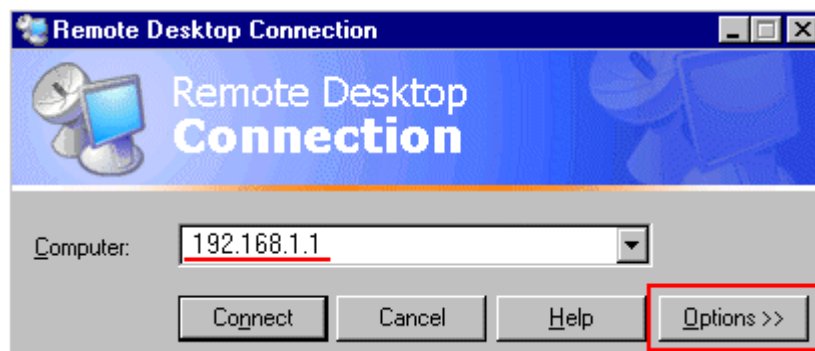


How to remotely connect to a different windows computer.

1. Right click on “my computer” and go here :



- 2.
3. The second field should not be highlighted. So deselect (allow users to connect remotely to this computer)
4. Go to START -> Accessories -> communication -> click on “remote desktop connection”



- 5.
6. insert the number : 131.193.130.201
7. When a screen shows up put it a user name and password.

And you are in. You can do anything u would normally do while in work.

When you want to end just end the window. There is minimize and close on top.